

# Isle of Wight Residential Trip



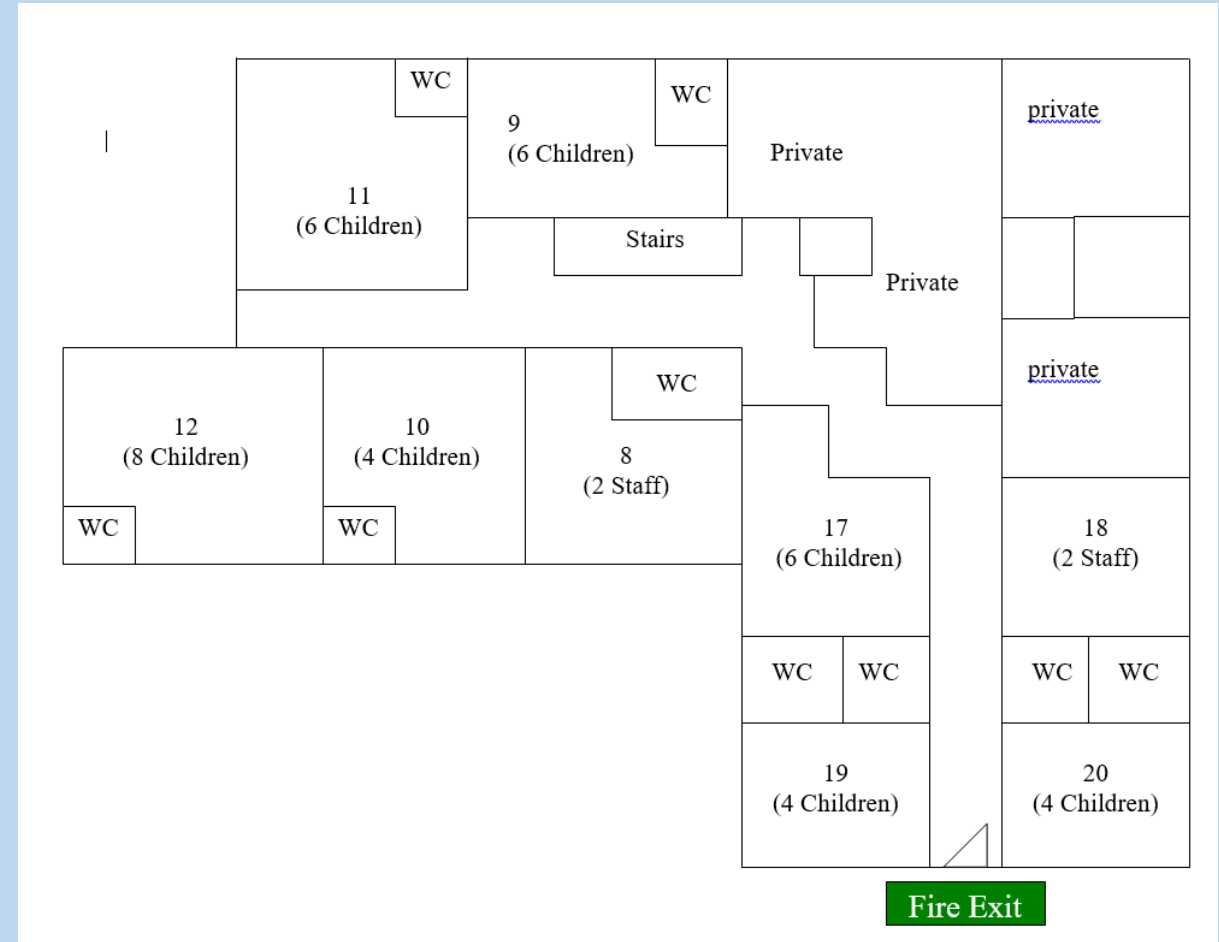
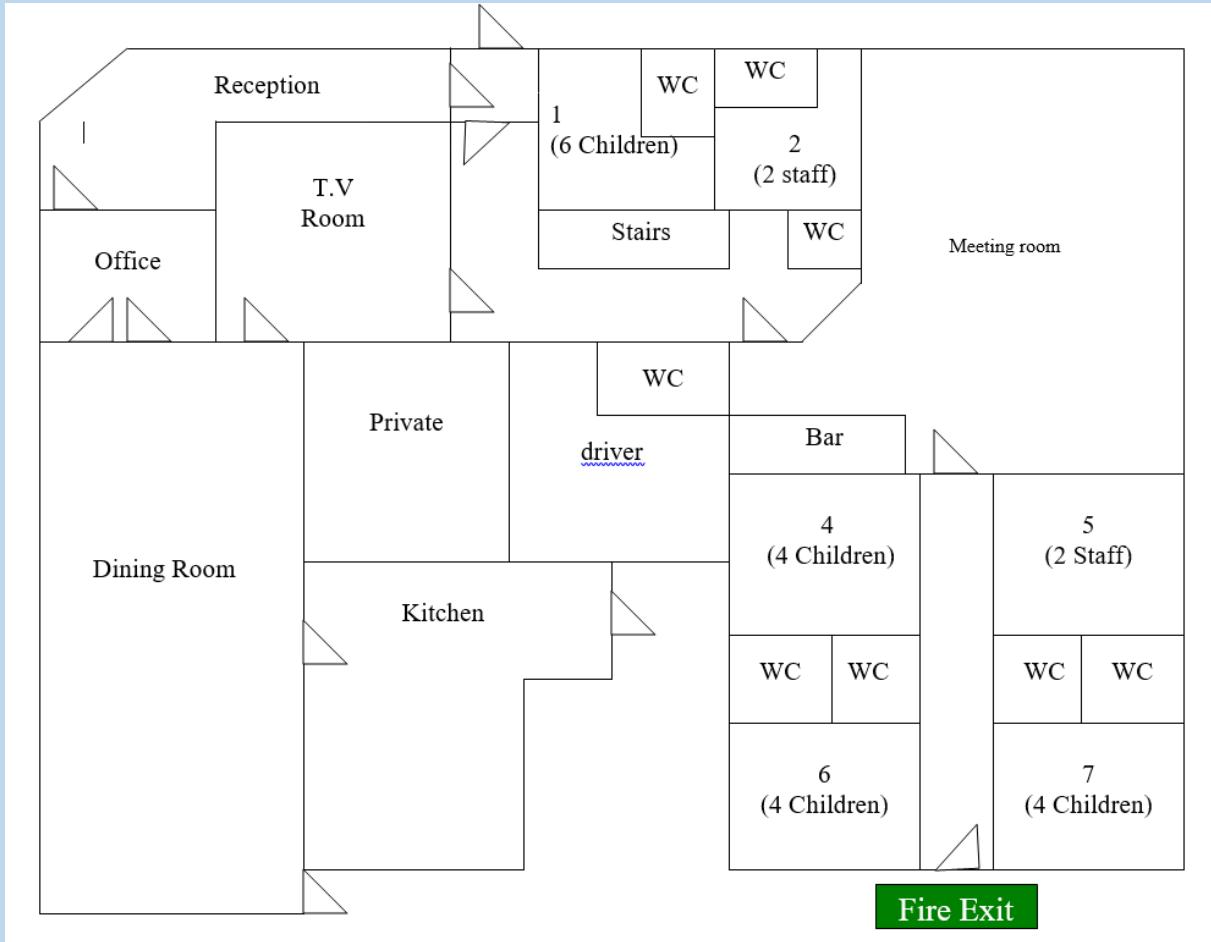
Monday 7th - Friday 11th July

We are staying at the in the  
Lorron Hotel in Sandown.

- It is a small guest house.
- It is a short walk to the beach
- We will be the only ones in the hotel.
- Children will have breakfast and dinner at the hotel with packed lunches provided each day (except the day we travel).



# Rooms



# Itinerary- Monday

- Children to arrive at school for 7:30am
- Leave school promptly at 8:00am.
- Wightlink Ferry and packed lunch.
- 1:00pm Tapnell Farm.
- Back to hotel to refresh and have dinner.
- Evening at the beach.



**Please note: children will need a packed lunch for first day.**



# Itinerary- Tuesday

- Carisbrooke Castle.
- Packed Lunch at the Castle.
- 2:30pm Donkey Sanctuary.
- 7:00pm Crazy Golf.



# Itinerary- Wednesday

- 10.00am Blackgang Chine in Chale, including rides (all day).
- Packed Lunch on site.
- 7:00pm Theatre Show – Shanklin Theatre.





# Itinerary- Thursday

- 10.00am Monkey Haven.
- Packed Lunch on site.
- Afternoon at Alum Bay including visit to the sand shop and boat cruise at 3:20pm.
- Evening – Quiz night.



# Itinerary- Friday

- Depart hotel.
- Wightlink ferry.
- Lunch in Portsmouth.
- Arrive back at school by 2:30pm (TBC).





# Food

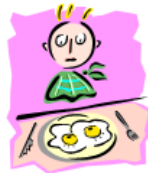
## BREAKFAST MENU



### CHILDREN

CEREAL  
TOAST

A... SAUSAGE, BACON & BEANS  
B... BEANS ON TOAST  
C... SCRAMBLED EGG  
ON TOAST



### STAFF

AS ABOVE WITH FRIED EGG



### DRINKS



CHILDREN...TEA OR SQUASH  
STAFF...TEA OR COFFEE

## DINNER MENU

### MONDAY

FISHFINGERS CHIPS AND PEAS

FISH CHIPS AND PEAS



### TUESDAY

CHILDREN

Pure orange juice /water melon

A... HOT DOGS, WAFFLES, SPAGHETTI  
B... CHEESE AND ONION ROLL WITH  
ABOVE

### STAFF

CHEESY BACON PASTA WITH SALAD

### WEDNESDAY

A... CHICKEN NUGGETS & CHIPS  
B... CHEESE AND TOMATO PIZZA  
CHIPS & SALAD

### STAFF

ROAST CHICKEN & CHIPS

### THURSDAY

TOAD IN THE HOLE

### DRINKS

CHILDREN...WATER OR SQUASH



# Kit List

## Main Bag

- Travel bag with name and address clearly marked on a luggage tag
- YOUR CHILD MUST BE ABLE TO CARRY THEIR OWN BAG
- 3/4 pairs of trousers/shorts (suitable length)
- 2/3 jumpers
- Enough t-shirts for 5 days (no vests, crops tops or strappy tops)
- 2 pairs of trainers
- Plenty of socks
- Enough underwear for 5 days
- Outfit for disco on Thursday Evening??? Quiz night??
- Bin bag or carrier bag for dirty/wet clothes/towels
- Pyjamas and slippers
- Towel
- Washing kit
- Sun cream and a sun hat
- Swim wear (costume/trunks)
- Flip Flops
- Beach Towel

## In Small Rucksack

- Packed lunch for Monday in a plastic bag that can be thrown away
- Labelled water bottle (Reusable)
- Disposable camera (optional)
- Waterproof jacket with a hood
- Warm coat and/or hoodie
- Named purse or wallet containing no more than £25.00

# Things NOT allowed:

- Any electrical items including; Mobile phones, games machines, digital cameras, hair dryers or hair straighteners.
- Chewing gum/sweets/chocolate
- Aerosol sprays
- Expensive or valuable clothes including football shirts.
- Jewellery (only small studs or inexpensive watches allowed)



**If any of these items are found they will be confiscated and given back to an adult when we arrive back at school.**





# Cost of trip

- The cost of this trip will be **£405.00**. This includes return coach travel from school to the Isle of Wight, full board accommodation, together with a full programme of activities and insurance.
- You will be able to pay by instalments if required using ParentPay.
- If your child is eligible for pupil premium for this academic year, the school will contribute up to 50% towards the cost of the trip and the price will be £202.50. The full balance should be paid by Friday 25th April 2025.
- In order to secure your child's place we require a deposit of £40.00 (£20.00 if your child is eligible for pupil premium) to be paid via ParentPay by no later than Friday 29th November 2024.
- This is non-refundable even if your child decides at a later date they do not wish to come.
- Any issues please do not hesitate to speak to a member of the year 6 team.

# More information

Nearer the time we will:

- confirm details such as the staff who will be attending, timings etc.
- supply you again with a checklist of things your child will need to pack.
- send out a form for you to complete to ensure we have the most up-to-date information about medical and dietary needs.

Questions???

Thank you for coming 😊

Please take a letter before you leave  
(we will also Ping it out tomorrow) with the cost  
information on and a copy of the kit list  
(which we will send out again nearer the time).